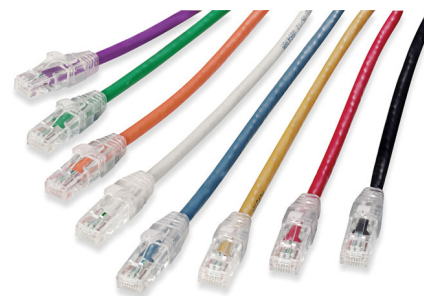


# PowerCat 6 U/UTP Patch Cord

Molex PowerCat 6 U/UTP Patch Cords are key components of PowerCat 6 U/UTP End-to-End Solution and are designed to support data networks for 10/100BASE-T and 1000BASE-T applications.

The patch cable is made from high quality four pair 24 AWG stranded copper wire. Available in a range of colors and lengths, PowerCat 6 patch cords are pre-terminated with RJ45 plugs and feature anti-snag slim strain relief slip on boots.



## FEATURES & ADVANTAGES

4 pair 24 AWG stranded copper wire

Pre-terminated with WE8W plugs

Slim clear anti-snag slip on boots

Suitable for EIA 568A or 568B wiring

LS0H sheath

RoHS Compliant

## SPECIFICATIONS

### Commercial Standards

ANSI/TIA-568.2-D-2018  
 ISO/IEC 11801-1:2017  
 UL Listed  
 ETL Verified  
 AS/CA S008:2020  
 RoHS Compliant  
 IEC-61935-2

### Fire Propagation Tests

LS0H Sheath: CSA FT1,  
 IEC 60332-1, IEC 61034, IEC 60754

### Mechanical

#### Cable

Conductor Size:

24 AWG stranded copper wire

Insulation diameter: 0.98 ± 0.05mm

Nom. O.D.: 5.9mm

Sheath: LS0H

Bend Radius: 4X O.D.

Operating Temperature: -25°C to +60°C

Storage Temperature: -40°C to +60°C

#### Plug

Minimum operating life:

750 insertion cycles

RJ45 Plug and Boot Material:

Clear polycarbonate (PC) UL 94V-0

Contact Material:

0.35mm thick copper alloy

Contact Plating: Selective gold

RJ45 Plug Dimensions compliant with:

ISO/IEC 60603-7-4 and FCC 47 Part 68

### Electrical

Max voltage: 150 VAC (max)

Max current: 1.5A @ 25°C

[www.molex.com/products/copper/cat6/](http://www.molex.com/products/copper/cat6/)

# PowerCat 6 U/UTP Patch Cord

## SPECIFICATIONS

### PoE

**Our PowerCat 6 system is suitable for PoE applications as defined below:**

IEEE 802.3bt from Type 1 to Type 4, and CISCO UPoE+

### Notes:

For new installations of PoE Type 3 / Class 5 and above that wish to be eligible for the Molex 25 year Application Assurance Warranty, we require Category 6A cable to be used throughout.

To confirm your PoE / RP3 cabling design is eligible for the Molex 25 year Application Assurance Warranty, your design must be verified and validated with the Molex PoE Calculator. Read more <https://www.molexces.com/poe-calculator>

Molex recommends that the PoE feature on an individual switch port is power disabled prior to unplugging the associated powered Device.

Molex recommends that the full range of PowerCat 6 products be used in a system to maximize cabling and PoE performance. Details on Molex requirements for Warranty can be found at <https://www.molexces.com/about-us/our-warranty/>

## ORDERING INFORMATION

Order No.	SAP No.	Description
PCD-02130-**-**	Consult Molex	PowerCat 6 U/UTP Patch Cord LS0H 0.25m #
PCD-02000-**-**	Consult Molex	PowerCat 6 U/UTP Patch Cord LS0H 0.5m #
PCD-02001-**-**	Consult Molex	PowerCat 6 U/UTP Patch Cord LS0H 1m
PCD-02002-**-**	Consult Molex	PowerCat 6 U/UTP Patch Cord LS0H 1.5m
PCD-02003-**-**	Consult Molex	PowerCat 6 U/UTP Patch Cord LS0H 2m
PCD-02005-**-**	Consult Molex	PowerCat 6 U/UTP Patch Cord LS0H 3m
PCD-02009-**-**	Consult Molex	PowerCat 6 U/UTP Patch Cord LS0H 5m
PCD-02013-**-**	Consult Molex	PowerCat 6 U/UTP Patch Cord LS0H 7m
PCD-02019-**-**	Consult Molex	PowerCat 6 U/UTP Patch Cord LS0H 10m
PCD-02029-**-**	Consult Molex	PowerCat 6 U/UTP Patch Cord LS0H 15m
PCD-02039-**-**	Consult Molex	PowerCat 6 U/UTP Patch Cord LS0H 20m

**Please Note:** All Patch and Equipment cords manufactured by Molex are tested for mechanical and continuity compliance. All cord lengths from 1m to 20m are tested for transmission performance compliance. Cords which are shorter than 1m, and longer than 20m, are outside of the scope of international cabling standards and may not meet the transmission performance requirements of those standards unless otherwise stated.

Insert color code in place of \*\* in part number when ordering Patch Cords:  
 0C=Red, 0E=Gray, 0H=Blue, 0J=Green, 0K=Yellow, 0W=White, 0P=Purple, 0N=Orange, BK=Black

[www.molexces.com/products/copper/cat6/](https://www.molexces.com/products/copper/cat6/)